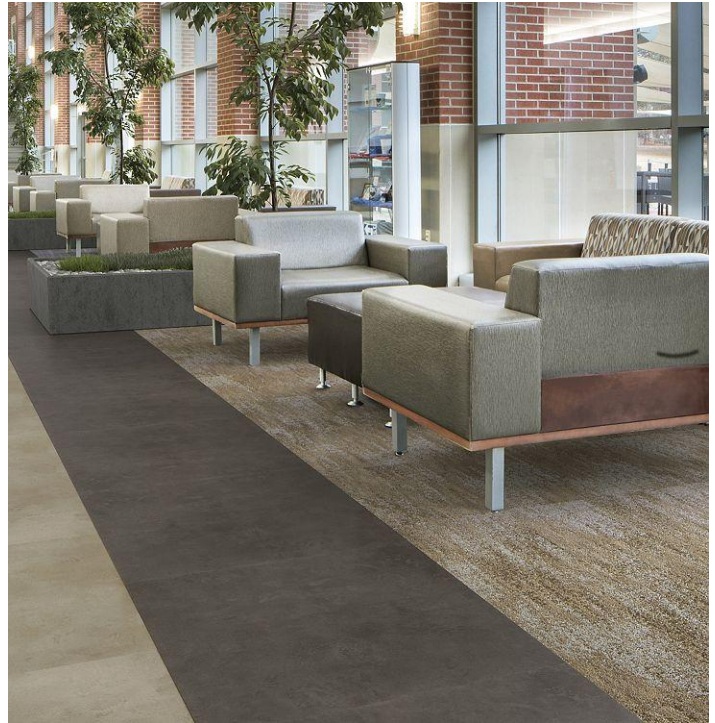


Bolder

Overview

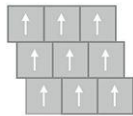
Feature	Description
Collection	Hot and Heavy
Style	Bolder (C0010)
Product Type	LVT
Size	36" X 36"
Construction	Commercial LVT
Gauge	5 mm
Total Thickness	5 mm
Wear Layer	20 mil (0.5 mm)
Finish	M-Force™ Ultra
Surface Profile	Embossed
Edge Profile	Squared
Installation	Glue Down, Loose Lay
Installation Method	Monolithic, Brick Ashlar, Vertical Ashlar, Random
Recommended Adhesive	M95.0, M99, MS160, M700 Plus, or Total Bond Adhesive



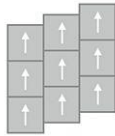
Recommended Installation Methods



Monolithic



Brick Ashlar



Vertical Ashlar

Colorways



River Rock

Color code: 832
Style number: C0010



Schist

Color code: 888
Style number: C0010



Pebble

Color code: 925
Style number: C0010



Onyx

Color code: 999
Style number: C0010



Ghaly Gray

Color code: 927
Style number: C0010

Testing

Feature	Description
Classification	(ASTM F1700) Class III, Type B, Embossed
Squareness	(ASTM F2421) ±0.10 in
Size and Tolerance	(ASTM F2421) ±0.016 in
Thickness	(ASTM F386) ± .005 in
Flexibility	(ASTM F137) Passes
Dimensional Stability	(ASTM F2199) Passes
Static Load Limit	(ASTM F970) 1000 psi
Residual Indentation	(ASTM F1914) Passes
Resistance to Chemicals	(ASTM F925) Passes
Resistance to Light	(ASTM F1515) Passes
Resistance to Heat	(ASTM F1514) Passes
Radiant Flux	(ASTM E648) Class 1
Smoke Density	(ASTM E662) ≤ 450
Wear Layer Thickness	20 mil (0.5 mm)
Lightfastness	(ASTM F1515) Passes

Sustainability

Feature	Description
Embodied Carbon	11.9 kg CO2e/sq m2
Carbon Handprint	-12.5 kg CO2e/sq m2
Beyond Carbon Neutral	-0.595
EPD	EPD Vinyl Tile
Material Health	Free of Orthophthalates and Heavy Metals
Mindful Materials	Participates in Mindful Materials Library
MindClick Rating	Achiever
Country of Origin	South Korea

Packaging

Feature	Description
Pieces per Carton	4
Weight per Piece	15.28
Cartons Per Pallet	25
Square Feet per Carton	36
Weight per Carton	61.12

Warranties

Limited 20 Year M-Force Ultra Commercial Warranty