

Grown Up

Overview

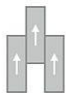


Feature	Description
Collection	Hot and Heavy
Style	Grown Up (C0075)
Product Type	LVT
Size	9" X 59.72"
Construction	Commercial LVT
Gauge	5 mm
Total Thickness	5 mm
Wear Layer	20 mil (0.5 mm)
Finish	M-Force™ Ultra
Surface Profile	Embossed In Register
Edge Profile	Micro-Beveled
Installation	Glue Down, Loose Lay
Installation Method	Brick Ashlar, Half Lap, Herringbone, Random
Recommended Adhesive	M95.0, M99, MS160, M700 Plus, or Total Bond Adhesive

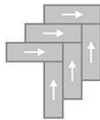
Recommended Installation Methods



Brick Ashlar



Half Lap



Herringbone



Random

Colorways



Vera

Color code: 132
Style number: C0075



Kingsley

Color code: 138
Style number: C0075



Knox

Color code: 241
Style number: C0075



Finn

Color code: 322
Style number: C0075



Jackson

Color code: 358
Style number: C0075



Lenox

Color code: 628
Style number: C0075

Colorways



Hermes

Color code: 758
Style number: C0075



Butler

Color code: 851
Style number: C0075



Emerson

Color code: 853
Style number: C0075



Cole

Color code: 958
Style number: C0075

Testing

Feature	Description
Classification	(ASTM F1700) Class III, Type B, Embossed
Squareness	(ASTM F2421) ±0.10 in
Size and Tolerance	(ASTM F2421) ±0.016 in
Thickness	(ASTM F386) ± .005 in
Flexibility	(ASTM F137) Passes
Dimensional Stability	(ASTM F2199) Passes
Static Load Limit	(ASTM F970) 1000 psi
Residual Indentation	(ASTM F1914) Passes
Resistance to Chemicals	(ASTM F925) Passes
Resistance to Light	(ASTM F1515) Passes
Resistance to Heat	(ASTM F1514) Passes
Radiant Flux	(ASTM E648) Class 1
Smoke Density	(ASTM E662) ≤ 450
Wear Layer Thickness	20 mil (0.5 mm)
Lightfastness	(ASTM F1515) Passes

Sustainability

Feature	Description
Embodied Carbon	11.9 kg CO2e/sq m2
Carbon Handprint	-12.5 kg CO2e/sq m2
Beyond Carbon Neutral	-0.595
EPD	EPD Vinyl Tile
Material Health	Free of Orthophthalates and Heavy Metals
LEED	Calculate LEED on Ecomedes
Mindful Materials	Participates in Mindful Materials Library
MindClick Rating	Achiever
Country of Origin	China

Packaging

Feature	Description
Pieces per Carton	6
Weight per Piece	6.91
Cartons Per Pallet	80
Square Feet per Carton	22.4
Weight per Carton	41.46

Warranties

Limited 20 Year M-Force Ultra Commercial Warranty